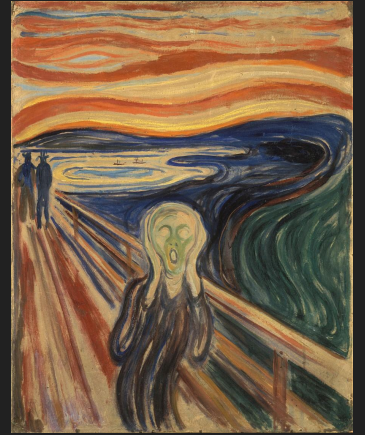


Painters



Pablo Picasso

Pablo Diego José Francisco de Paula Juan Nepomuceno María de los Remedios Cipriano de la Santísima Trinidad Mártir Patricio Clito Ruiz y Picasso)



Cubism-Pablo Style born? 1973

Lived Big

Radical Innovative Art

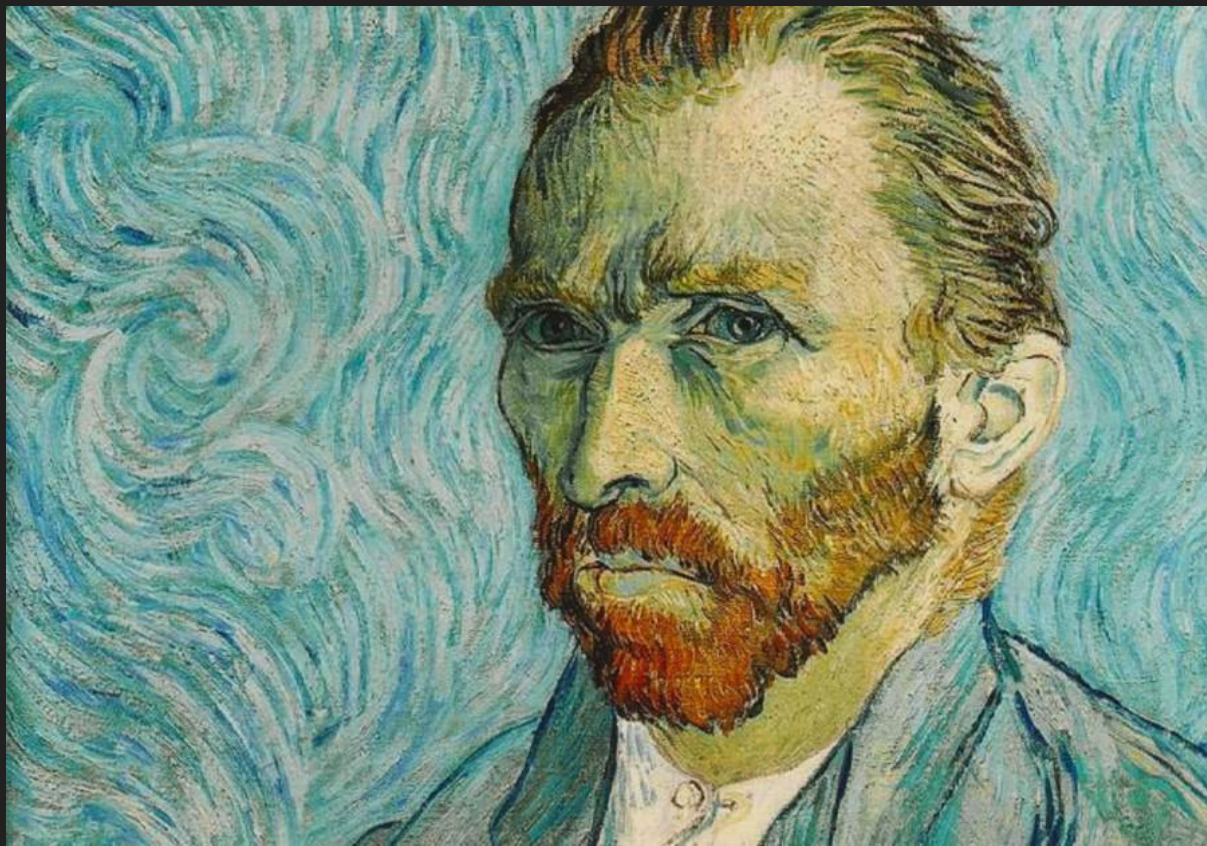
Collage and Cubism

Destroyed realistic art styles

Set the stage coming into the 1900's



Vincent Van Gogh 1853-1890



Post Impressionism- Van Gogh

Reacted against naturalism impressionist

Had mental illness

Legendary painting techniques created

Wanted an emotional response

Only sold 1 painting in his life

Starry Night in asylum

He cut his own ear off



Michelangelo



Renaissance- Michelangelo

1475-1564

He was harsh on himself and work

Painter, Sculptor, Architect and Poet

He would forge paintings

Terribly fashioned and made people angry



Henri Matisse 1869–1954

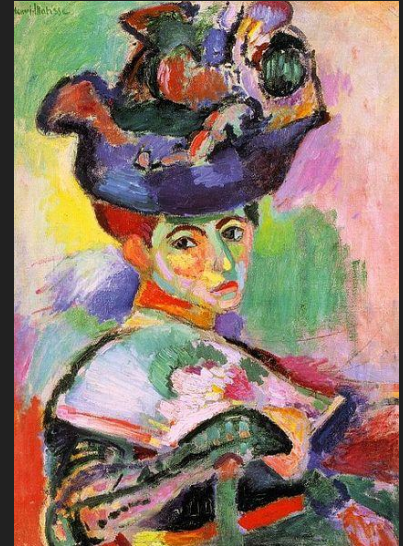


Henri Matisse- Fauvism

Vivid expressionist, non natural colors

Colors to express emotion often using colors that had nothing to do with the natural colors of the subject

Initially criticized



Rene Magritte



Rene Magritte-Surrealist 1898-1967

People to look at ordinary things in different ways

Painted objects where they did not belong

Was not a huge success right away

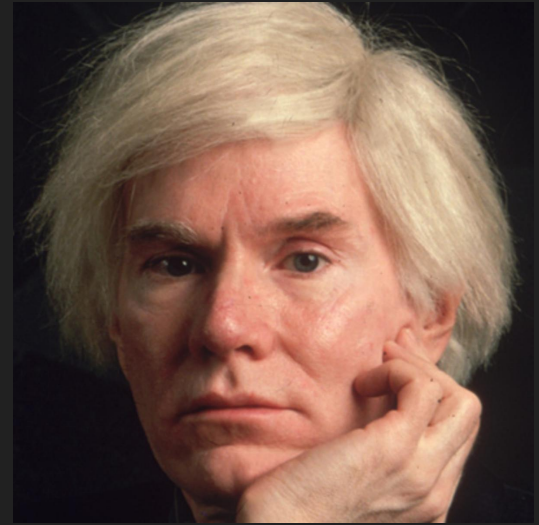
Did not like school

Tried other styles, but did not like them

(He made fun of them)



Andy Warhol



Andy Warhol-Pop Artist 1928-1987

Using mass produced commercial goods in his art (Pop Art)

Repetition of the goods with contrasting colors

Wanted to become rich and famous unlike others

Liked messing with the press

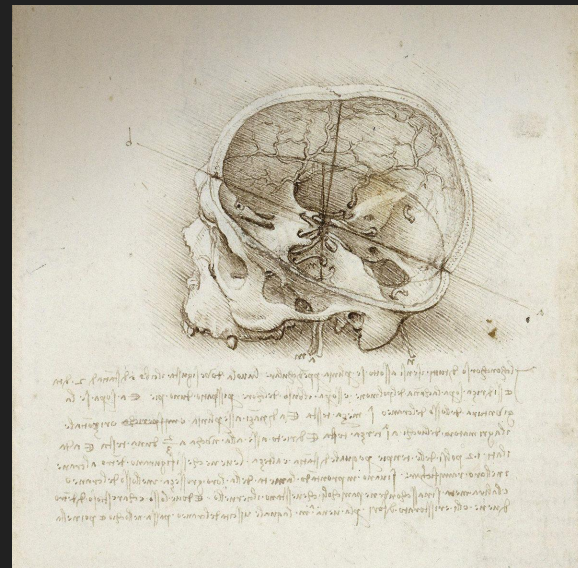
He was shot three times in 1968

6 hour film of someone sleeping called "Sleep"

He had over 15 cats



Leonardo da Vinci



Leonardo da Vinci-Renaissance 1452-1519

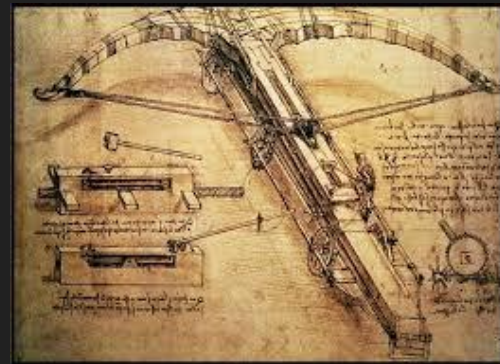
A sculptor, an architect, a poet, a composer, a scientist, a mathematician and an inventor.

Classified as a Genius

Vegetarian

Never went to school





Frida Kahlo



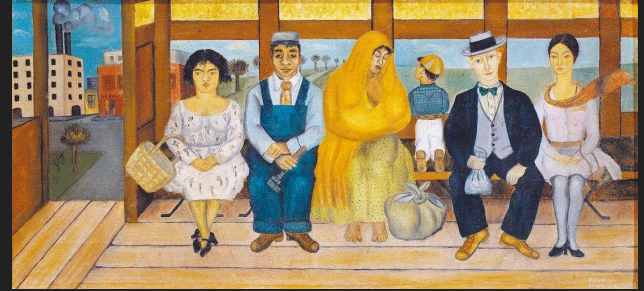
Frida Kahlo-1907-1954

Painted portraits and self portraits

Inspired by nature

Questions of identity, postcolonialism, gender,
class, and race in Mexican society

1925 trolley hit a bus sending a metal
handrail into her abdomen and forever changing
her life



Yayoi Kusama



From Japan

Yayoi Kusama

Sculpture and Installation

Contemporary art

By adding all-over marks and dots to her paintings, drawings, objects and clothes she feels as if she is making them (and herself) melt into, and become part of, the bigger universe





Salvador Dalí



Started young

Got on trouble for daydreaming

Salvador Dalí-1904-1989

Most famous surrealist artist

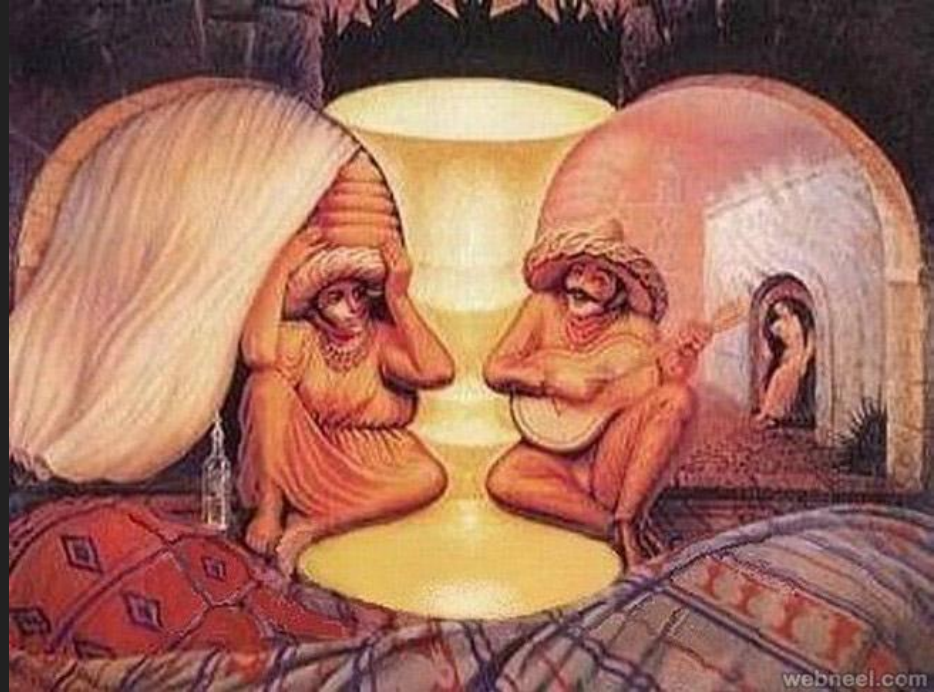
Went to art school

Very quirky

Worked with Walt Disney

Loved Califlower

Intense Marriage



SALVADOR DALÍ'S MUSTACHE HAS ITS OWN BOOK

Develop a Rubric!

Rough Draft

- Well develop lines
- Influenced artist apparent
- Colors mapped

Final Draft

- Neatness-clean lines, clean coloring, mapping out/color blocking, can tell what the idea is
- Connection to the Artist/looks inspired/influenced
- Fill the space
- Creativity-Out of the box-----materials and content

Develop a Rubric!

Rough Draft

- Artist connection is made
- Name
- Well developed lines
- Colors mapped

Final Draft

- Neatness-pencil marks erased, Clean painting, can tell what it is, inside lines, drafting
- Connection to artist
- Creativity----Not copied, but influenced,
-

Pablo Picasso

Michelangelo

Leonardo Da Vinche

Henri Matisse

Rene Magritte

Andy Warhol

Van Gogh